

TECHNICAL BULLETIN

PRODUCT: COMMERCIAL PLATE HEAT EXCHANGERS

INSTALLATION OF PLATE HEAT EXCHANGERS:

Connection of Primary and Secondary pipework

To ensure the specified output of the plate heat exchanger, the pipework connections must be made in accordance with *Fig. 1* below.

The orientation of the plate heat exchanger can be confirmed by the position of the chevron.

Connections must not be reversed, as this will affect the output of the plate heat exchanger due to the length of the internal water ways.

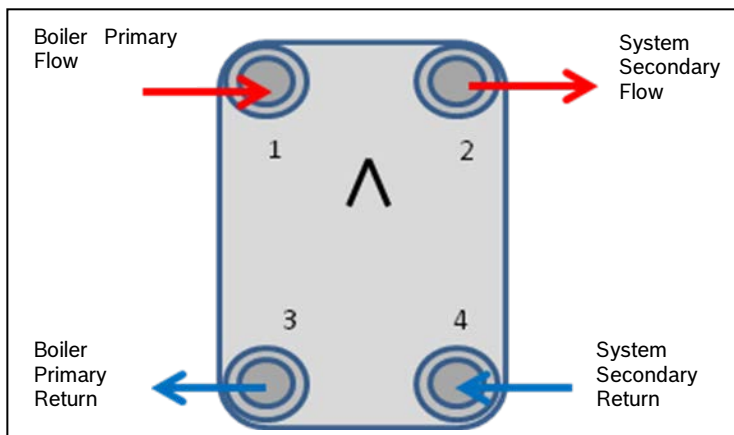


Fig. 1 Plate Heat Exchanger orientation & connections

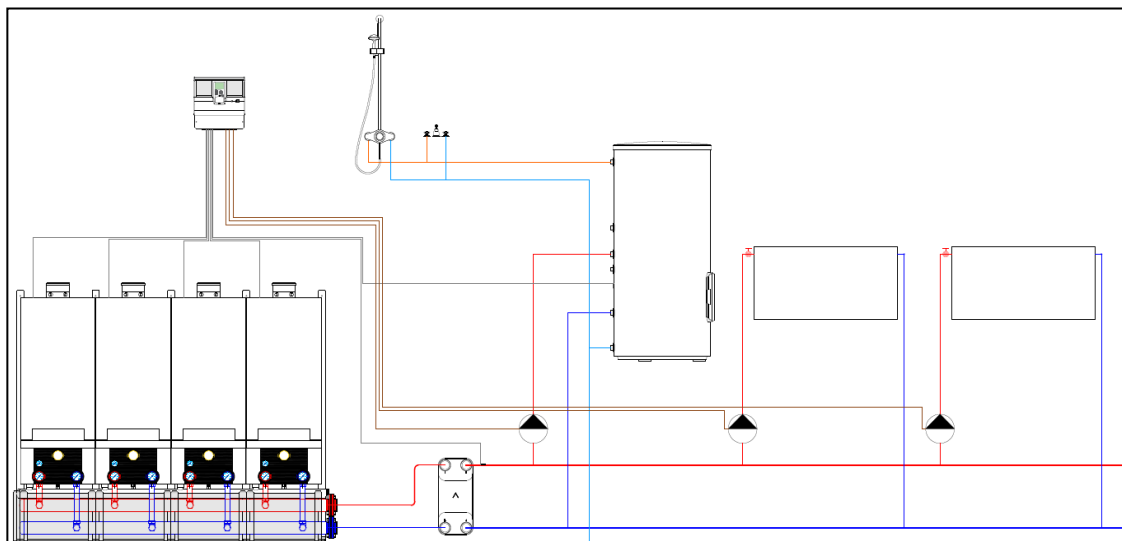


Fig. 2 Example plate heat exchanger system layout

Whilst it is always our intention to fully assist, it is essential to recognise that all information given by the company in response to an enquiry of any nature is provided in good faith and based upon the information provided with the enquiry. We recommend that advice should always be checked with your installer or contract partner. Consequently, the company cannot be held responsible for any liability relating to the use or repetition of such information or part thereof. In addition, whilst making every reasonable effort to monitor the performance and quality of our supply, installation and service network, we do not accept responsibility for the workmanship or operation of any third party company that the company may have promoted either in conversation, e-mail or other communication. Similarly, the views and opinions expressed in communication with individuals within the company may not reflect that of the business as a whole.

You can find this, and all issued technical bulletins on our website at: <http://www.bosch-industrial.co.uk/tb>