

Reference Ritter Sport, Germany

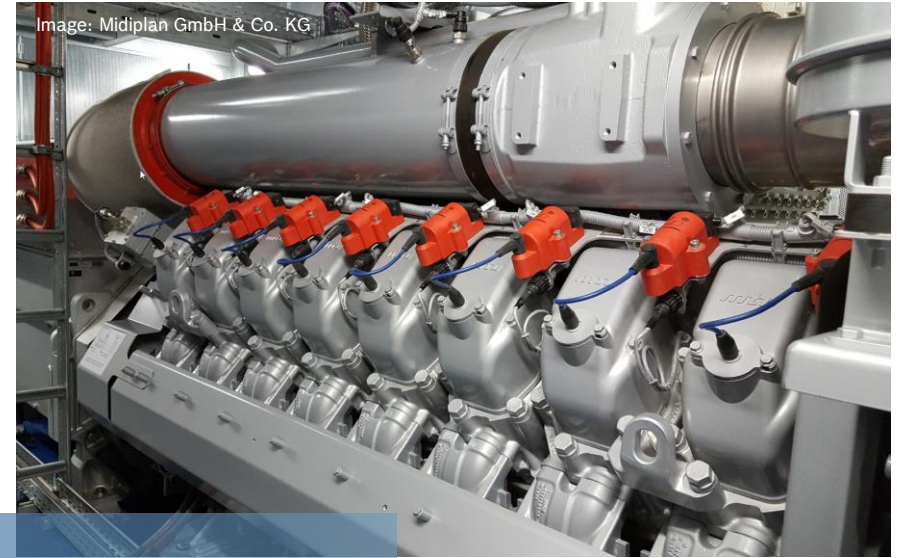
Eco-friendly energy for famous chocolate

Background

- ▶ Ritter Sport had been operated a Bosch CHP unit since 2002
- ▶ Since then, primary energy savings per year: 12 Mio. kWh
- ▶ Installation of a new CHP unit in 2015 due to a higher production capacity (three-shift operation, 300 days/year)

System

- ▶ Bosch CHP system with 1,280 kW_{el}
- ▶ Electric power generation of 10 million kWh per year
- ▶ Flexible use of heat for heating or cooling purposes
- ▶ Annual operating time of approx. 8 200 hours



Benefits

- ▶ 30 % of the electric power demand covered by environmentally friendly, low cost power generation on site
- ▶ 80 % of the heat demand covered by engine waste heat
- ▶ Reduced CO₂ emissions compared to the electric power from the German grid: around 2 900 tons per year